



Steering races kit (VKWY 62000/63000)

Solutions for the automotive industry

Ride safe and ride smooth with SKF Steering races kit. Ideal after-market solution for motorcycle owners, workshops looking for OE quality.

SKF bearing technology has been part of the vehicle industry from its invention, and we have been leading the way ever since setting the world's standard for quality, and providing the technology needed for new levels of vehicle performance and reliability. With new innovations and developments SKF help you move your business and your vehicles forward.

The Steering Races Kit holds 2 sets of outer and inner rings along with the specified number of steel balls. When you specify SKF Steering Races Kits, you have the reassurance of perfect-fit parts from the world's largest bearing company installing confidence in your motorcycle.

One clear advantage with SKF Steering Races Kits is that the balls used have high a quality and dependability, leading to the best performance in the steering assembly. SKF balls have their unique ability to retain their original spherical form which ensures that no marks are left on the raceway due to any non-rotation of the balls. Thus reducing any discomfort for the driver during the steering of the

motorcycle. Within SKF we never compromise on quality and ensure selling only high performance parts and products. SKF quality assures reduced installation problem in the workshops, reduced performance problems down the road, and reduced lost profits due to returns and defective parts.

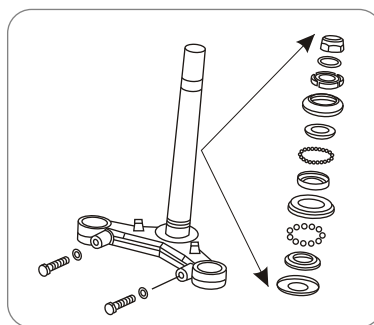
The SKF steel balls hold the most accurate dimensions and provide longer trouble free operation of the steering assembly. To provide the customer with the most reliable solutions, SKF Steering Races Kits are completed and supplied with OE quality outer and inner rings.



VSM Packaging for Steering races kit

Product		Application Kit Content
VKWY 62000	Bajaj Auto	2 cones races, 2 cup races & 46 steel balls
VKWY 63000	Hero Honda	2 cones races, 2 cup races & 42 steel balls

Position of the Steering Races in the Steering Column of a motorcycle



Install confidence, install SKF!